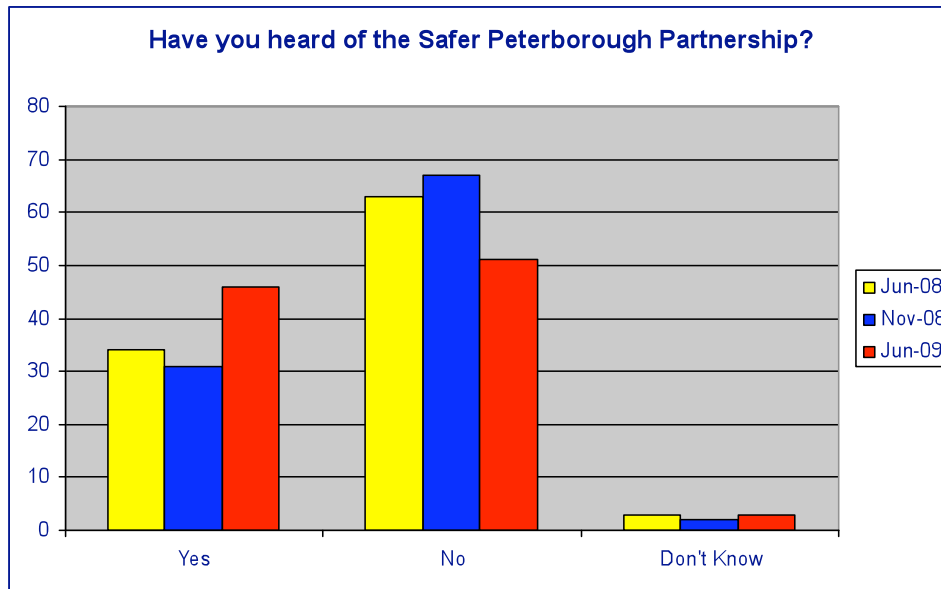
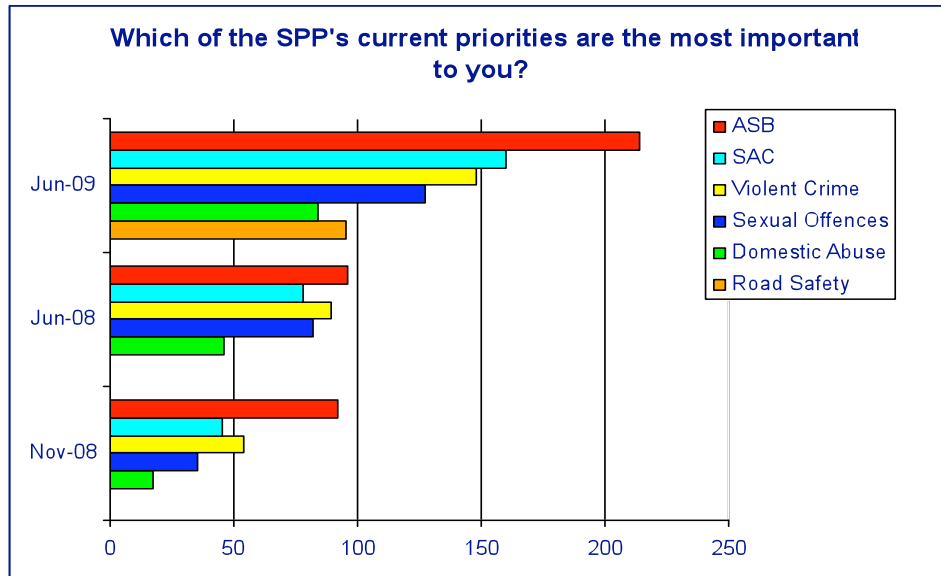


FACE THE PUBLIC CONSULTATION EVENT RESULTS – JUNE 2009



There were 459 questionnaires completed during the Face the People Event at the Peterborough Festival in June 2009, this compares to 200 people who were surveyed at the Face the People event in June 2008 and 225 in November 2008.

The percentage of people who have heard of the Safer Peterborough Partnership rose in June 2009 with just under half of respondents stating that they had heard of the Partnership, this is really positive as the brand has been in public circulation for less than 12 months and the number of people who have heard of the brand continues



Anti-social behaviour (ASB) continues to be the area of most concern for those surveyed which was an issue for almost 60% of respondents; this is a trend that has continued from June and November 2008. The numbers here are actual numbers, rather than percentages as some people chose more than one priority.

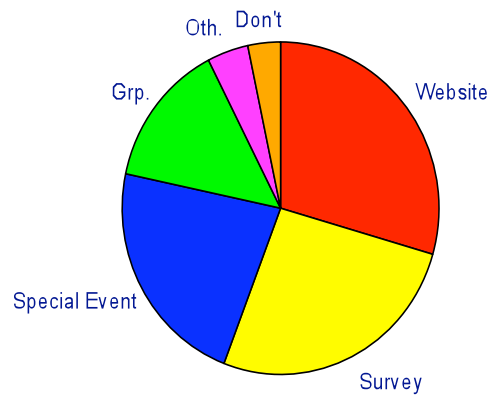
There were a number of qualitative responses when respondents were asked what other areas of community safety they would like to prioritise. There were a wide range of answers but the most common were substance misuse, particularly drug misuse; issues relating to children including child abuse and lack of youth provision; hate crime and racism; lack of police on the streets; and bicycle theft. More qualitative data is included in the appendix.

What are the top three ways you would like to receive information about the work of the SPP?



The local newspaper was the top answer for ways the respondents wanted to be informed about the work of the Safer Peterborough Partnership, with newsletters being the next most popular option. In the 'other' category publications such as Your Peterborough and ESP magazine were mentioned as well as panel meetings, school, street leaders, television and eCops. Interestingly there was not a huge difference between how respondents wanted to receive information about the work of partnership with young people and those over 60 both opting for information through newspapers and newsletters.

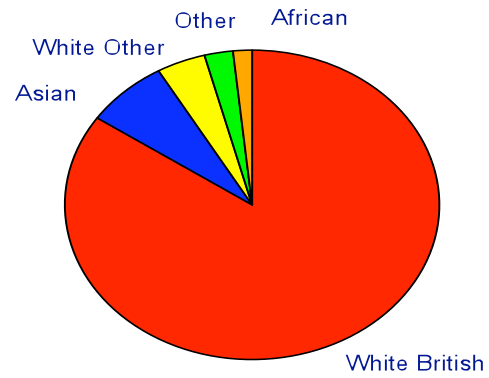
How would you like to be consulted or give your feedback on the work of the Partnership



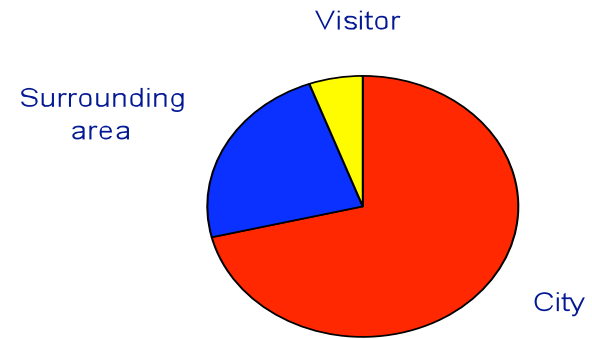
The respondents were asked in which ways they most wanted to be consulted and give feedback, views and opinions and in this case the website was the most popular answer, which was closely followed by surveys. In the 'other' category there was mention of using newspapers, direct mail, panel meetings, Your Peterborough and through schools. Young people recorded slightly different answers, they felt they would most like to be consulted through events such as the Peterborough Festival and via the website, some also mentioned using Social Networking Sites such as Facebook and Bebo and school. The 60+ respondents preferred consultation through surveys and special events.

Demographic Profile of Respondents

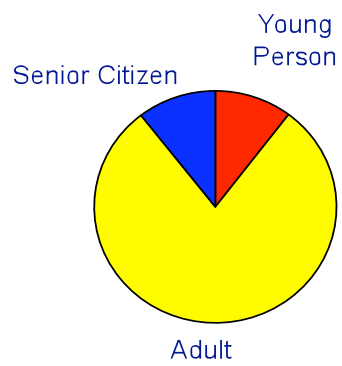
How would you describe your ethnic background?



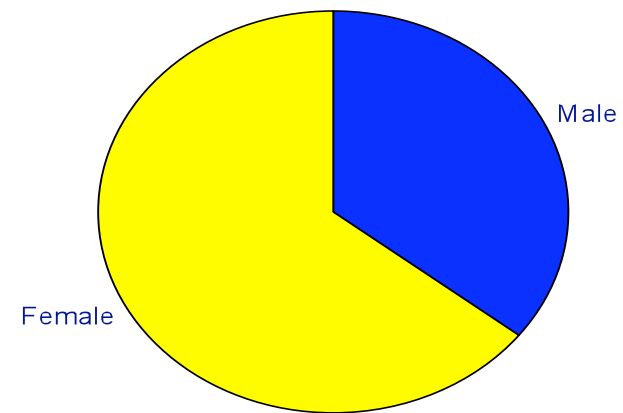
Where do you live?



Age



Gender



Appendix

Detailed below is some of the qualitative data around what respondents reported as their own community safety concerns:

ASB/Criminal Damage

Begging on Broadway
Anti-social cycling on Lincoln Road
ASB near Hampton Police Station
ASB, drugs, alcohol and music at the Chestnut Avenue allotments

Police Resource

More hi-vis patrols
PCSOs – more of them and on the streets for longer
Police are too slow after they have been called
Police needed in the clubs and pubs at night
They just want to give an incident number and that is all
More PCSOs needed in Queensgate at night

Young People

What is being done to keep young people off the streets?
More youth provision is needed
Teenage behaviour in Deaconscroft
Safer areas for children to play
More activities for children and more family-orientated things to do
No facilities for children that are monitored and safe

Environmental

Making areas look clean, tidy and safer
Lighting of public areas including underpasses
Fly-tipping, burning of excess rubbish
PCC need to complete landscaping work more than twice a year
Graffiti

Lack of respect for road signs

Violent Crime

Gun crime
Knife crime

Road Related

Parking in Millfield is hazardous
Anti-social parking
Mini-motos
Illegal parking by taxis on Grimshaw Road
Road safety in Walton

Other

Safety measures for disabled people
Housing Associations and the public should know who their local officers are
Path at the back of Asda is not safe
Lack of respect for OAPs
How do we know the SPP are succeeding, what good are we doing?
What is actually being done to sort Peterborough out?
Make it an offence to have spray paint in your possession
Diversity issues
Support for the elderly
Racial segregation in Millfield
Educating newcomers about the law
More CCTV and higher quality
Information regarding community groups