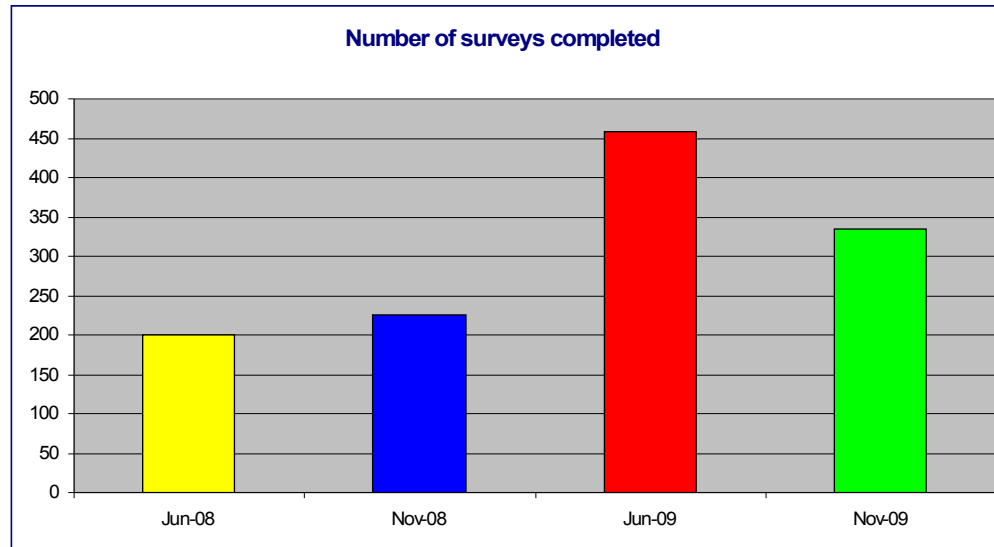
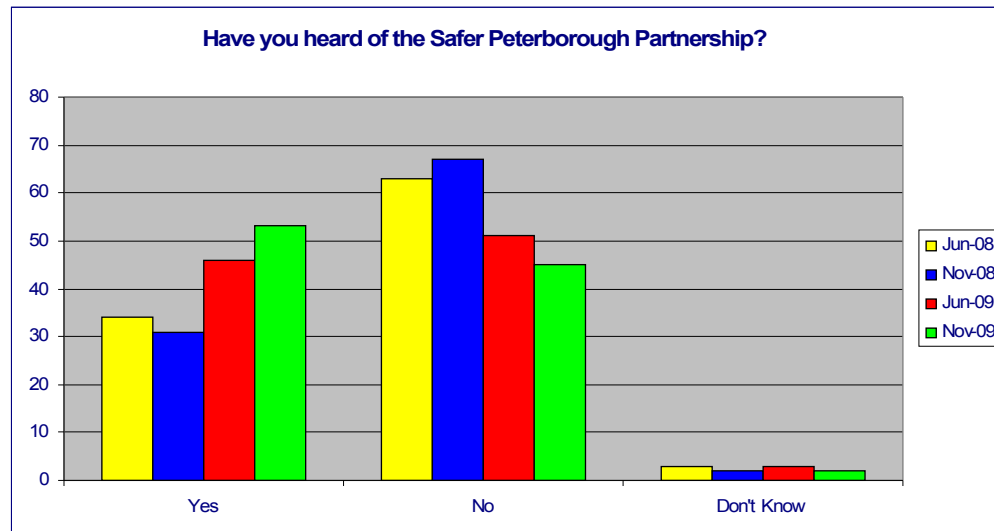


Face the People Consultation Event – November 2009



Number of surveys completed:

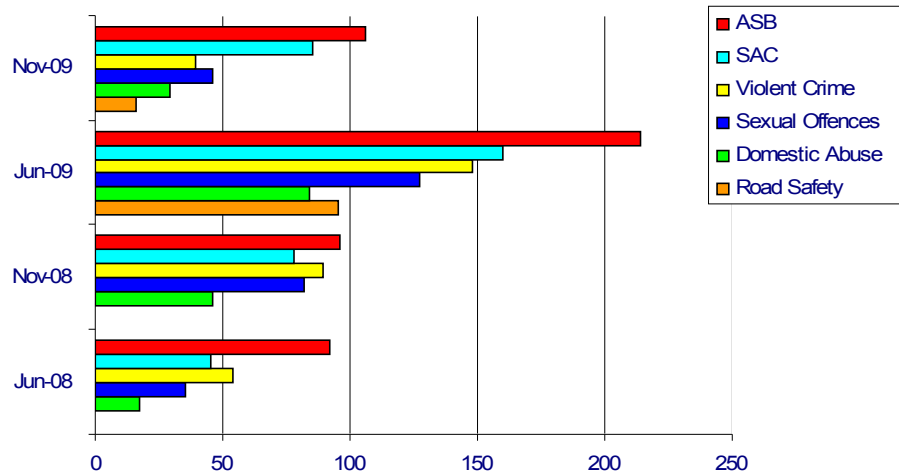
In November 2009, the number of surveys completed by the SPP team was 335, this was not as many as during the Face the People event at the Peterborough Festival in the summer as the SPP team only spent around two hours filling in questionnaires, compared to a whole day at the summer event.



Have you heard of the SaferPeterborough Partnership?

The number of people who respond positively to this question continues to rise with 53% of respondents stating that they had heard of the SaferPeterborough Partnership. When questioned further, the Evening Telegraph was the medium through which most knew of the brand, this was followed by Your Peterborough, posters and Heart FM. The least popular were BBC Radio Cambridgeshire, ESP magazine and Lite FM.

Which of the SPP's current priorities are the most important to you?

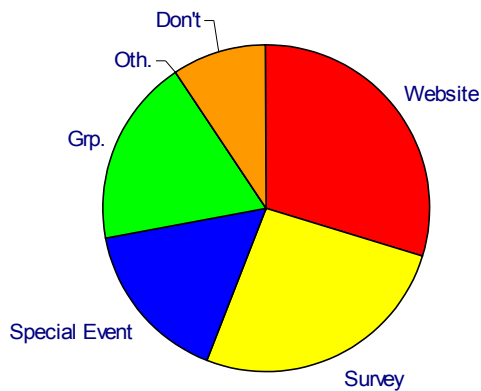


Which of the SPP's priorities are most important to you?

The responses to this question continue to be consistent with previous Face the People events, with anti-social behaviour at the top of the respondent's priorities. This is followed by Serious Acquisitive Crime. The only slight change this time was that more people were worried about sexual offences than violent crime, however there was only a very small difference between the two.

The survey also asked whether there were any other areas of community safety that should be included as priorities, the most popular responses were child safety/child abuse, better lighting (particularly in underpasses), drug abuse, more visible policing and hate crime.

How would you like to be consulted or give your feedback on the work of the Partnership



How would you like to be consulted or give your feedback on the work of the Partnership?

In line with previous events, most people would like to be consulted about the work of the SPP via the website, this is followed by surveys and special events, such as the Christmas Lights switch on.

What areas of the City make you feel unsafe?

A new question was introduced into the survey this year around where in the City people are most worried about crime and fear for their safety.

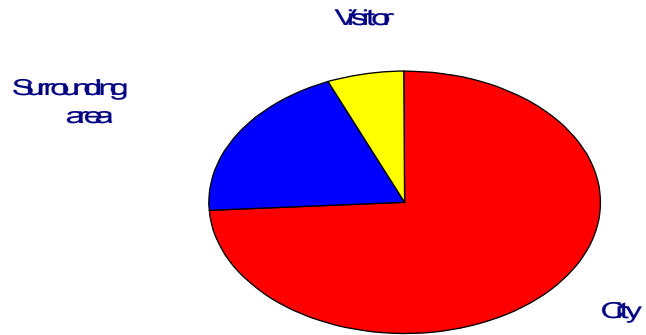
The areas of the City where people felt most unsafe were as follows:

- Millfield and New England 54 responses
- City Centre 51 responses (many of these responses were specific to feeling vulnerable at night)
- Welland and Dogsthorpe 25 responses
- Ortons, particularly Orton Goldhay 28 responses
- Westwood 20 responses
- Bretton 16 responses

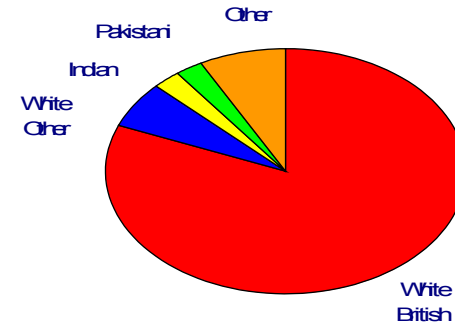
There were a number of other areas which were not geographically specific, which people cited as problems, 12 people mentioned underpasses, particularly in the Westwood area and public parks.

Demographic Profile of Respondents

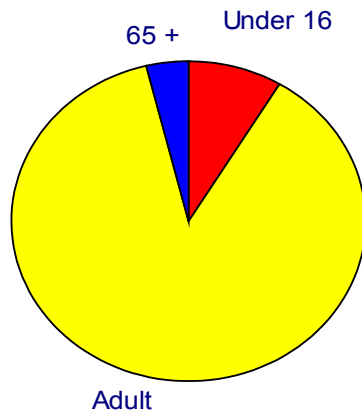
Where do you live?



How would you describe your ethnic background?



Age



Gender

