

Travelchoice, 3rd Floor Midgate House
Midgate, Peterborough, PE1 1TN
Tel: 01733 747474 Fax: 01733 317499
Email: travelchoice@peterborough.gov.uk

Welcome to the new look Foot:print newsletter, your termly newsletter from Travelchoice. Foot:print is full of ways that you can get involved in making school journeys safer, greener and healthier!

Dates for Your Diary

- **January 2010:** Government deadline for submitting School Travel Plans (STP) to your School Travel Plan Co-ordinator
- **January - July 2010:** Cycle Maintenance Workshop
- **April 2010:** Bike to School Week
- **May 2010:** Miles Better

Safer Journeys To School (SJTS)

With the help of the SJTS funding, Stanground St John's is the first school to have cycle stands with a handy place to store cycle helmets too!



For information on how your school can receive SJTS funding, contact Travelchoice, contact details above.

Park & Stride

Southfields Junior School have used part of the SJTS funding on a sign for a 'Park & Stride' car park. The car park serves as a 'drop off' and 'pick up' point for parents who

wish to avoid school congestion and enjoy the fresh air as they walk their children the short distance to school. Visit www.travelchoice.org.uk or contact Travelchoice for more information on Park & Strides.

The Road Race



In support of Walk to School Week, nine schools in Peterborough enjoyed a Theatre in Education performance, The Road Race! Joanne Whiting, year 5 teacher at Leighton Primary School, said, 'An engaging session; the children found the drama very comical and entertaining, and they clearly got a lot from it.' Theatre in Education performances are offered to primary schools every year and raise awareness of the issues associated with excessive car use.

Walk this way!

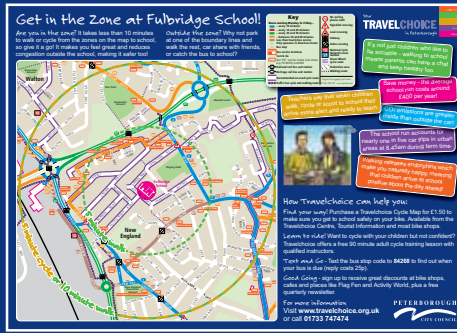
The majority of primary schools in Peterborough celebrated international Walk to School Week in October. Newark Hill (pictured on the right) hosted the launch of Walk to School Week and took part in the design a poster competition. Thank you to all schools that took part and sent in their entries. It was very difficult to choose the best poster and we hope all schools and children had fun! The winner, Amber Walker, from St Botolphs

Primary School, won a selection of prizes plus some goodies for her school. Carloss visited St Botolphs to present Amber with her prize.



In the zone?

Eleven primary schools in Peterborough had Travel Zone posters produced for their school last term. Children at Southfields Junior School walked five popular school routes marking their location at five minute intervals on a map. Back at school the children joined the points together to create a series of boundary lines. Those living within the 15 minute zone are encouraged to walk or cycle to school. The maps help children gain a greater perspective of how far they



can walk or cycle in 15 minutes, as well as encouraging them (and their parents!) to think about the effect that congestion has on the environment and local community.

All aboard the Walking Bus!



The Walking Bus is becoming something of a travel trend at John Clare Primary School! The Walking Bus

currently has up to 14 passengers and operates rain or shine every Wednesday! Martin Fry, headteacher at John Clare, said 'We began our walking bus during Walk to School Week (October) to enable children who travel by car to enjoy some exercise and ease car congestion around school. We will aim to build this up to 5 days a week over the coming year'. The 'passengers' meet at a local car park and follow a 15 minute route through Helpston village. A big thank you to all involved and congratulations John Clare Primary School!

Cycle Maintenance

Travelchoice hope to run free cycle maintenance workshops for students in years 7/8. The workshop is an hour long extra-curricular activity designed to give students the confidence to maintain their own bikes and hopefully continue to use their bikes when they leave school and go into work! The workshop will run through the parts of a bike and basic bike maintenance. Contact

Travelchoice if you would like to be one of five schools involved in this first time project!



Sustainable staff at the Phoenix School

For a whole week, every half term, headteacher Phil Pike puts a hold on any pre or after school commitments, so that staff are able to car share. It's great to see a school leading by example – keep up the good work! Visit www.travelchoice.org.uk for information on how to get involved in car sharing.

Website Launch!

Travelchoice is proud to announce that their new website will be launched sometime in January 2010. The website will be the quickest way to learn more about your travel choices in Peterborough.

www.travelchoice.org.uk

NEW! Miles Better

In a shift from the traditional Walk to School Week, Miles Better encourages walking, cycling, car sharing and buses. We understand that some children live too far away to walk and recognise that car sharing, cycling, public transport and park and stride play an important part in reducing the impact of the school run on communities, often saving money at the same time! To support all modes of sustainable travel this latest project will see children making their way around a giant map of the UK. Along the way, children will pass through places of interest and famous monuments. There will be a reward for the class which collects the most 'miles' over a two week period. More information coming soon! Travelchoice will continue to run the International Walk to School Week annually in October.

Useful tips – how to keep a School Travel Plan live

A STP is a live document which should be re-worked to ensure safe and sustainable transport. Some quick ways to embed the travel plan into the ethos of the school include:

- Add the travel plan to the school website.
- Make a pledge to sustainable travel at the bottom of school letters/emails.
- Inform new parents about the travel plan and include some of the actions in the prospectus.
- Ask a group of pupils to create a sustainable transport display showing links to the environment and health.

Next time!

Look out for the next edition of Foot:print for updates and important events. We will be featuring the outcome of the cycle maintenance workshop and the Miles Better project.

Feed back



As always we appreciate your feedback. Please send in stories, photos or any other ideas!