

# Scheme Cost and Programme

## The scheme cost

### Finance for the scheme is from 2 sources:

- Community Infrastructure Fund - £7.01m
- A Developer Contribution would be made towards the overall cost of the footbridge / cycleway.

In terms of Value for Money the scheme shows a good economic return for the investment:

	£m *
Present Value of Benefits	61.8 (pvb)
Present Value of Costs	6.3 (pvc)
Net Present Value	55.5 (npv=pvb-pvc)

\* For the purposes of the Government's Economic Assessment:

- Costs are in 2002 prices and are discounted to 2002.
- Evaluation over a 60-year period.

Benefit to Cost Ratio 9.9 (BCR=pvb/pvc)

- Schemes with a BCR greater than 1 are seen to be economically viable.

## When will it happen?

### Work already completed:

- Preliminary design work for scheme
- Completion of topographical survey
- Completion of ecological survey

### September 2006

- Public Exhibition
- Submit Design to Planning Authority
- Submit Application for Scheduled Monument Consent

### October 2006

- Refine Detailed Design

### Mid-November 2006

- Approval to Construct Scheme
- Great Crested Newt Licence Application

### January 2007

- Erect Great Crested Newt Fencing

### July 2007

- Start Construction

### March 2008

- Scheme Completion

Your city, your move!

# Have your say.....

## Thank you for your time and effort

We are very interested in hearing your views. Please could you take the time to complete the questionnaire provided at the exhibition reception and place it in the box provided. Alternatively, they can be returned to Atkins, at the address below, no later than Monday 25 September 2006.

**Peterborough City Council and Atkins would both like to take this opportunity to thank you for your interest and support of this scheme.**

*'thank you'*

## Contact details

### Andy Ross

*Transport Planning Team Manager*

#### **Peterborough City Council**

3rd Floor, Midgate House  
Midgate  
Peterborough  
PE1 1TN

Tel: (01733) 317471

Email: [andy.ross@peterborough.gov.uk](mailto:andy.ross@peterborough.gov.uk)

### Steve Boyle

*Principal Transport Planner*

#### **Atkins Highways & Transportation**

Threadneedle House  
9-10 Market Road  
Chelmsford  
CM1 1XA

Tel: (01245) 245155

Email: [steve.boyle@atkinsglobal.com](mailto:steve.boyle@atkinsglobal.com)

**PETERBOROUGH**  
  
CITY COUNCIL

**ATKINS**

Your

**TRAVELCHOICE**

in Peterborough

public transport

walking

cycling

innovation

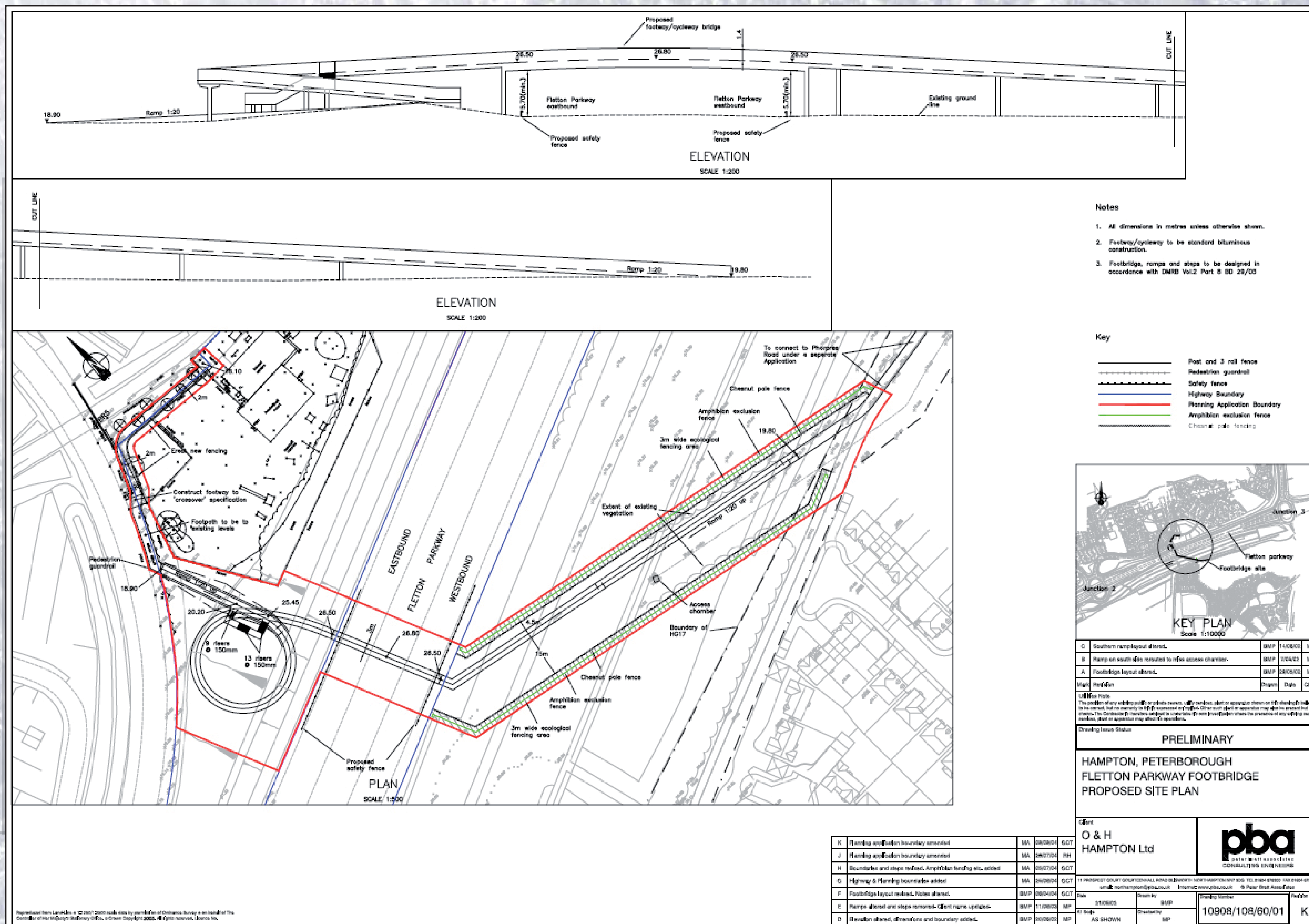
information



EXCELLENCE  
2007

# Fletton Parkway Cycleway/Footbridge

Hampton landowners, O&H, have been granted planning approval for a footbridge & cycleway to be provided to link the Hampton and Orton housing areas. This bridge across the A1139 will provide increased accessibility between the two communities. The bridge will fit in with the proposed road re-alignment and it is anticipated that this will be built at the same time. The bridge design, which formed the basis of the Planning Application, was prepared by O&H's consulting engineer **pba** and is highlighted in the drawing below.



Your **TRAVELCHOICE** in Peterborough

- public transport
- walking
- cycling
- innovation
- information